



# HEALTHY AGEING INNOVATION CLUSTER

## April 2019

AGING 2.0 <https://www.aging2.com/grandchallenges/>

Aging 2.0 Grand Challenges is a global initiative to drive collaboration around the biggest challenges and opportunities in Aging.

## 8 Grand Challenges

### INNOVATION PRIORITIES FOR AGING 2.0 COMMUNITY

- Topics identified from 6 years of bottom-up and top-down dialogue with stakeholders from across Aging 2.0's interdisciplinary, intergenerational, international community of older adults, senior care providers, thought-leaders and entrepreneurs.



# Grand Challenges (1)



Ageism and outdated social norms have led many older adults in both rural and urban communities to feel isolated and marginalised. Helping older adults get and stay meaningfully engaged is critical for their health and the health of our communities. New and creative ways are needed to not only tap into their wisdom but also provide opportunities for lifelong learning and meaningful engagement across the lifespan.

# Grand Challenges (2)



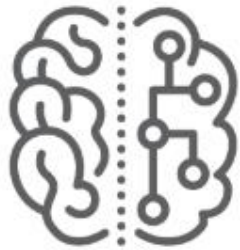
Despite the majority of older adults stating a preference to age in place, “one third of people over the age of 65 need assistance with at least one activity of daily living (e.g. eating, bathing, dressing)”. Products and services are needed to not only support older adults basic daily activities, but also to foster and support their ability to thrive, pursue their passions and engage with their chosen lifestyle.

# Grand Challenges (3)



The healthcare journey can be particularly complex and fragmented for older adults, two-thirds of whom have at least two chronic conditions. With three-quarters of global healthcare spending going to chronic care management, families and payers are aligned in their desire to care for people in the least restrictive most cost-effective setting possible. Families and providers need new tools and care models to support care transitions, clinical collaboration, medication management, population health management and remote care delivery.

# Grand Challenges (4)



BRAIN  
HEALTH

Maximising cognitive ability and brain health is increasingly a priority for ageing societies as the number of people with cognitive limitations and mental health issues continue to rise. New approaches, tools and services are needed to increase awareness, reduce stigma, improve prediction, speed diagnosis, enhance treatment and support caregivers.

# Grand Challenges (5)



Care for older adults is provided by informal and formal caregivers, both of which increasingly care for people with high levels of acuity and complex conditions. Family caregivers - who are often juggling other family and work responsibilities while living remotely from the care recipient - need better support, training resources and tools to support their loved ones and themselves. On the professional side, staff shortages and quality concerns require new solutions to help attract, train, develop and leverage scarce human capital.

# Grand Challenges (6)



Everyday objects, homes and communities not originally designed with longevity in mind, often become obstacles to movement, safety, independence and socialising. With safety and mobility continuing to be top priorities for older adults, there is a need for products, programmes and services that enable people to maximise their safety, strength, balance, fitness, independence and mobility as they age.



# Grand Challenges (7)



People are living longer and traditional models of work and retirement have not kept pace. To finance this increasing longevity, we need to provide new opportunities for later life employment, new models for planning for and financing care as well as better ways of preventing scams and frauds.

# Grand Challenges (8)



END OF  
LIFE

Death is inevitable, but that doesn't seem to make it any easier to prepare for. Far too often, the way people experience the end of life fails to honour how they have lived their lives. Better health outcomes, high quality and cost-responsible care – can and should exist in tandem. By leveraging emergent technologies and encouraging collaborations, we can expand the range of possibilities for the end of life experience.

# Roadmap...?

Activities	Timescale
Establish the Cluster	Dec 2018
Identify Vision, Impacts, Priorities	Feb 2019
Key Challenge Areas for Collaboration	April 2019
Leads/groups to explore challenges & scope approach	
Initiate & develop propositions collaboratively	
Identify funding opportunities & timelines	
Host challenge competitions/Bid submissions	
Implementation	
Learn & Share	

Progress some of these concurrently?

WHO definition of Healthy Ageing:  
**“the process of developing and  
maintaining functional ability that  
enables wellbeing in older age”**

This includes a person's ability to;

- meet their basic needs
- learn, grow and make decisions
- be mobile;
- build & maintain relationships
- contribute to society

# Healthy Ageing Innovation Cluster

## Purpose

- Collective of shared interest
  - expertise and skills
- Share information and support knowledge exchange
- Seek & solve demand led challenges
- Host challenge competitions
- Identify funding opportunities
- Build Collaborations

## Activities

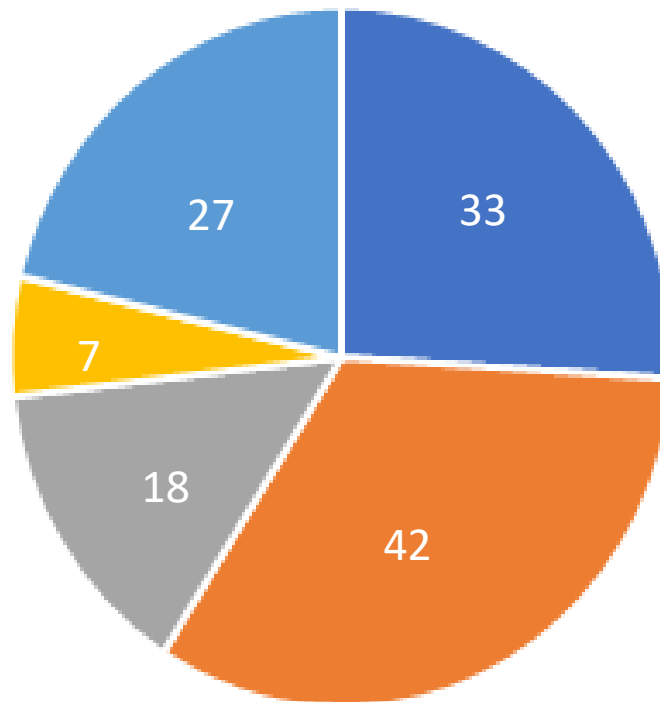
- Current focus on anticipated IUK Grand Challenges – Healthy Ageing but many other funding sources
- Identify key priorities and collaboration opportunities

Facilitated by.....



# HAI Cluster Membership – Feb 2019

Number of Cluster Members



127  
Members

■ Academic ■ Industry ■ Local Authority ■ NHS ■ Other



# Healthy Ageing Innovation Cluster

- **Discussion Session (Feb 2019)**
  - Vision & Impact – what difference are we trying to make collectively?
  - Priorities – what are our key collaboration opportunities?
  - Connecting & Integrating – what useful existing assets/links with other activities & organisations?

# HEALTHY AGEING COLLABORATION PRIORITIES

## KNOWLEDGE EXCHANGE

### Awareness of Policy & Guidance

- Scottish & UK Government – Policy Direction
- Relevant Strategic Guidance & Best Practice
- Team Scotland Approach

### Awareness of Technology

- Consumer Technology
- Keeping pace with a fast moving market
- Build Trust to Share

### Identify Funding Opportunities

## JOINT DEVELOPMENTS

### Shared Focus on Specific Conditions/Challenges

- Falls,
- Diabetes,
- Physical Activity

### Support Independent Living

- Transport
- Housing
- Supporting people to work longer
- Hospital at home
- Care in the Community
- Reducing inequalities

### Develop

- Test beds
- Data/Analytics
- Patient/Citizen Journeys

## RESEARCH & METHODS

### Prevention

- When should interventions best be made?
- Better adoption at earlier stage in life?

### Evidence Impact

- Health Economics
- Methodologies
- Real World Impacts

### Ensure Citizen at the Centre

- What does the citizen want?
- How best engage with the end user?
- Co-design
- Build Trust

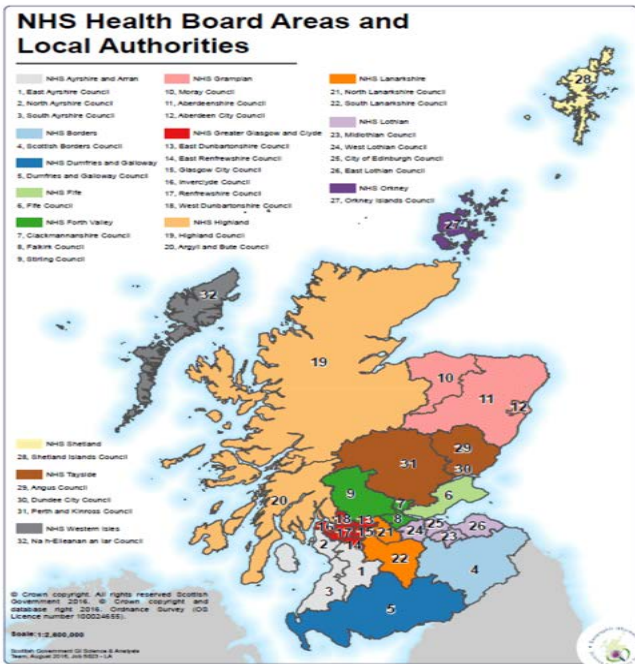
## SKILLS & CAPABILITIES

### Skills & Training

- Joint Learning

### Business Models for Scotland





# One Test Bed Scotland



Innovation, Commercialisation,  
Translation, Adoption

Investment, Acceleration, Growth,  
Sustainability



# Test Bed Function

*Provide real-world explorations/partnerships, providing advice/testing 'combinatorial' innovation (new combinations of products and processes) aiming to improve patient/citizen outcomes at the same or less cost than current practice; whilst supporting economic growth*

# ACTIVITY



- **Supply led Innovations-** Procurement Accelerator, Health Inr Partnerships, Supplier Feedback Forums, Academic Translation, Enterprise sponsored Inward Investments etc
- **Demand Led Innovations-** SBRI, Hackathons, Innovation Partnership, Open Innovation Projects
- **Internal Innovations-** SHIL, Innovation Hubs, Health and Social Care Partnership Award Schemes, Clinical Entrepreneurs etc
- **Investment Incentivised Innovations-** Banks, UK Industrial Strategy Funds, Investor Led, City Deal etc

OFTEN CROSS OVER

## Industrial Strategy Challenge Fund



# Example: NHS Greater Glasgow and Clyde COPD

SCOTLAND  
CAN DO



# AI and Diagnostics

## iCAIRD

Industrial Innovation in Artificial Intelligence and Digital Diagnostics



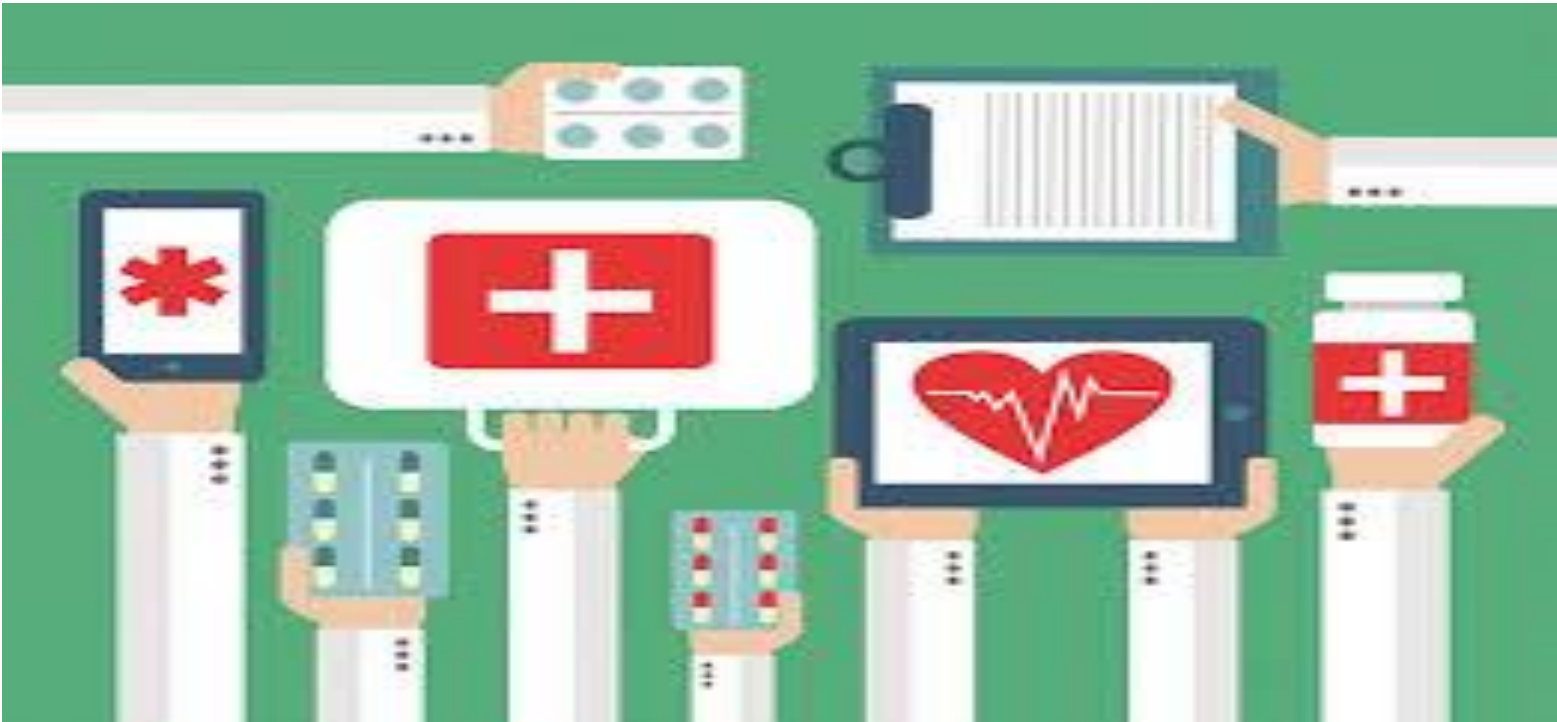
28 February 2019



**PHILIPS** **Canon**



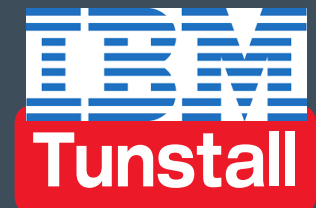
# HEALTH AND SOCIAL CARE CATALYST- Demand Led Innovation Programme



# Examples

- I. Diabetes and data enabled in patient care
- II. Mental Health AI and triage
- III. COPD AI Upscaling
- IV. Trauma Network and Ambulance data
- V. Create Scotland's Command Centre-Flow
- VI. Osteoporosis and DEXA scan data
- VII. Falls and Overnight Care
- VIII. Pathology Image matching automation
- IX. AI and Fracture SBRI
- X. Kidney Cancer and Precision Treatments





Enabling independent living

Next Generation Service  
for Healthy Ageing

# Next Generation Service for Healthy Ageing

---

Our aim is to extend healthy independence through delivering new digitally enabled service models addressing key issues such as:

Frailty

Long term conditions

Co-morbidities

Loneliness



We will do this by developing:

1. Blue print for a proactive, personalised, predictive Healthy Ageing service model
2. Foundation for advanced healthy ageing analytics
3. Accelerated market access for SME products

# New service model which brings the whole network together



The connectivity of IP has the power to deliver a wide range of possibilities within Independent living – for users, choosers and formal and informal carers.

There is growing consumer interest in health and well being applications and services.

Business models are changing with data as the crucial element rather than hardware of software products.

# Common Challenges of Ageing

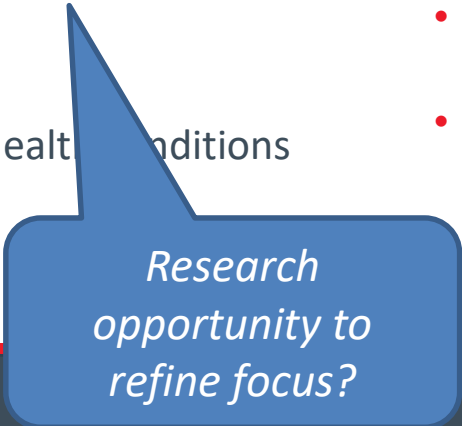
---

## Challenges?

- Loneliness
- Fitness & Physical – muscle degeneration
- Medication adherence / reviews & management
- Nutrition and Hydration
- Frequent Infections – Eg UTI's
- Cognitive Impairment
- Poor Sleep
- Accessible Home
- Personal Security
- Co-morbidities/chronic health conditions

## Potential Solutions?

- Social Connections & Activities
- Rehabilitation / Virtual Coaching / Exercise Groups
- Video Reviews / Automated Dispensing
- ADL / Weight Management / BMI
- ADL/ Temperature Management
- ADL/ Safer Walking Tech
- Wearables / Apps
- Smartlocks / Video Calls/panic alarm/Hive/Ring
- Home & Mobile Health Monitoring



*Research opportunity to refine focus?*

# Next Generation Service Model

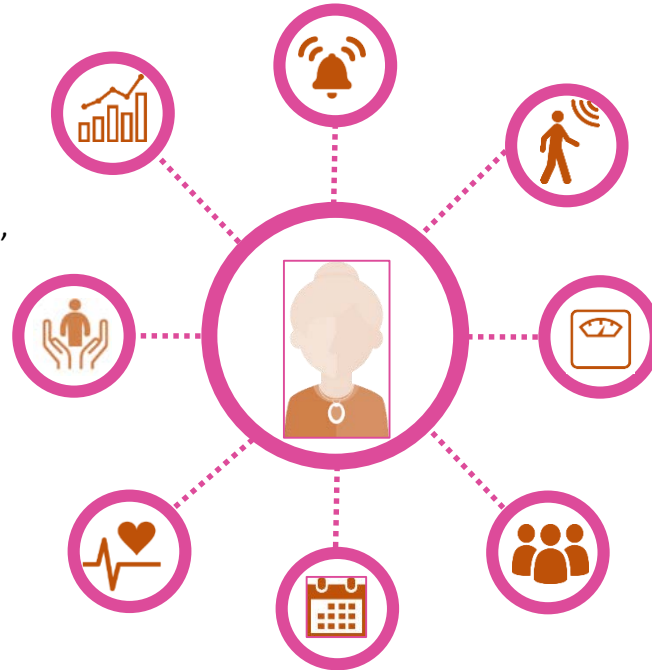
## personalised, proactive & preventative care

### Services at home/in community:

- Extensive environmental and personal IoT sensors (inc. wearables)
- Real Time monitoring to define activity patterns and increased predictive capabilities
- Enhanced menu of services for choosers, users & carers – see discussion point slide
- Safe walking with geolocation

### Wellbeing Programmes (Consumer overlay)

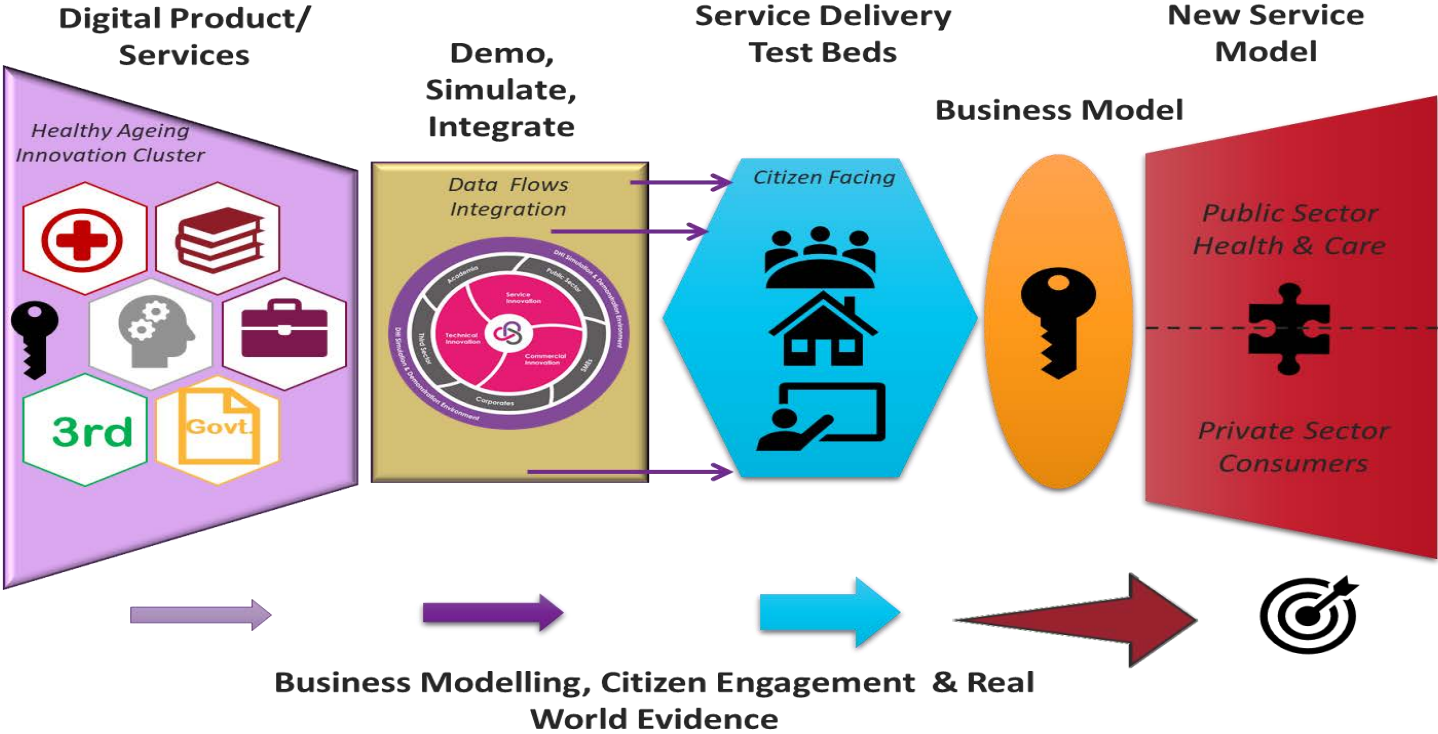
- Calendars and Personal Reminders
- 'Vincles' Program – Social & Community Connections
- Life & Fitness Coaching (Relaxation)
- Cognitive Gameification
- Nutritious & Balanced Fresh Food
- Digital Inclusion & Skills Programme



### Care programmes (State commissioned)

- Active and Healthy Aging Promotion Program
- Processes and protocols for integrated health and care pathways e.g. falls
- Programs of early detection and prevention of cognitive impairment. Tele Stimulation
- Physical and functional tele-rehabilitation
- Telemonitoring programmes for people with chronic diseases
- Carers assessment & support programmes
- Specialist Skillsets:
  - Psychosocial care program ?? Such as??
  - Abuse prevention.
  - Suicide prevention.
  - Contingency and major disaster management

# Integrated and accelerated marketplace





NEIGH  
BOUR  
HOODS  
OF THE  
FUTURE

The text is rendered in a bold, sans-serif font where each letter is composed of multiple overlapping, semi-transparent layers. This creates a 3D effect with shadows and highlights. The colors of the layers range from light pink to a darker magenta. In the center of the letter 'O' in the word 'BOUR', the numbers '20' and '19' are stacked vertically in a white, clean sans-serif font.

CREATING A BRIGHTER FUTURE FOR OUR OLDER SELVES

# THE CHALLENGE

In an ideal world, what could our homes and neighbourhoods look like in ten to twenty years' time?  
What should we be doing now to disrupt the status quo and make this vision a reality?



‘Our ambition,  
as a collective,  
is to build a  
prototype  
Neighbourhood  
of the Future.’

**Bimlendra Jha**

Chief Executive Officer, Tata Steel UK





**Do I really want to die  
before I get old?**





# Multigenerational Housing is the future





# Modern methods of construction





**Platform design has transformed  
the automotive industry –  
Could it do the same for housing?**



# Mobility





# Health + Care



www.hospital.com

**HOSPITAL**

We provide high quality medical services with trained specialists and advanced medical equipment. Our team is completely involved with the patients delivering a comprehensive range of services ranging from primary to tertiary care, from consultation and diagnosis, planning and executing treatment, and following-up results.

- Home
- About Us
- Patient Services
- Find a Doctor
- Our Centers
- Contact Us

Search

Hotline Center  
Tel: 00-832932

Online Services

- Click Consult a Doctor
- Click Contact Us
- Click Prescription

We have almost 20 tenants ranging from daily convenience stores, banks and popular international chains. In addition, there is a selection of retail and food and beverage outlets. We provide high quality medical services with trained specialists and advanced medical equipment. Our team is completely involved with the patients delivering a comprehensive range of services ranging from primary to tertiary care, from consultation and diagnosis, planning and executing treatment, and following-up results.





# Technology





# Finance



# Thank you

Neighbourhoods of the Future 2019  
AAA Congress May 14/15 London

Ian Spero  
ian@agileageing.org



AgileAgeingAlliance



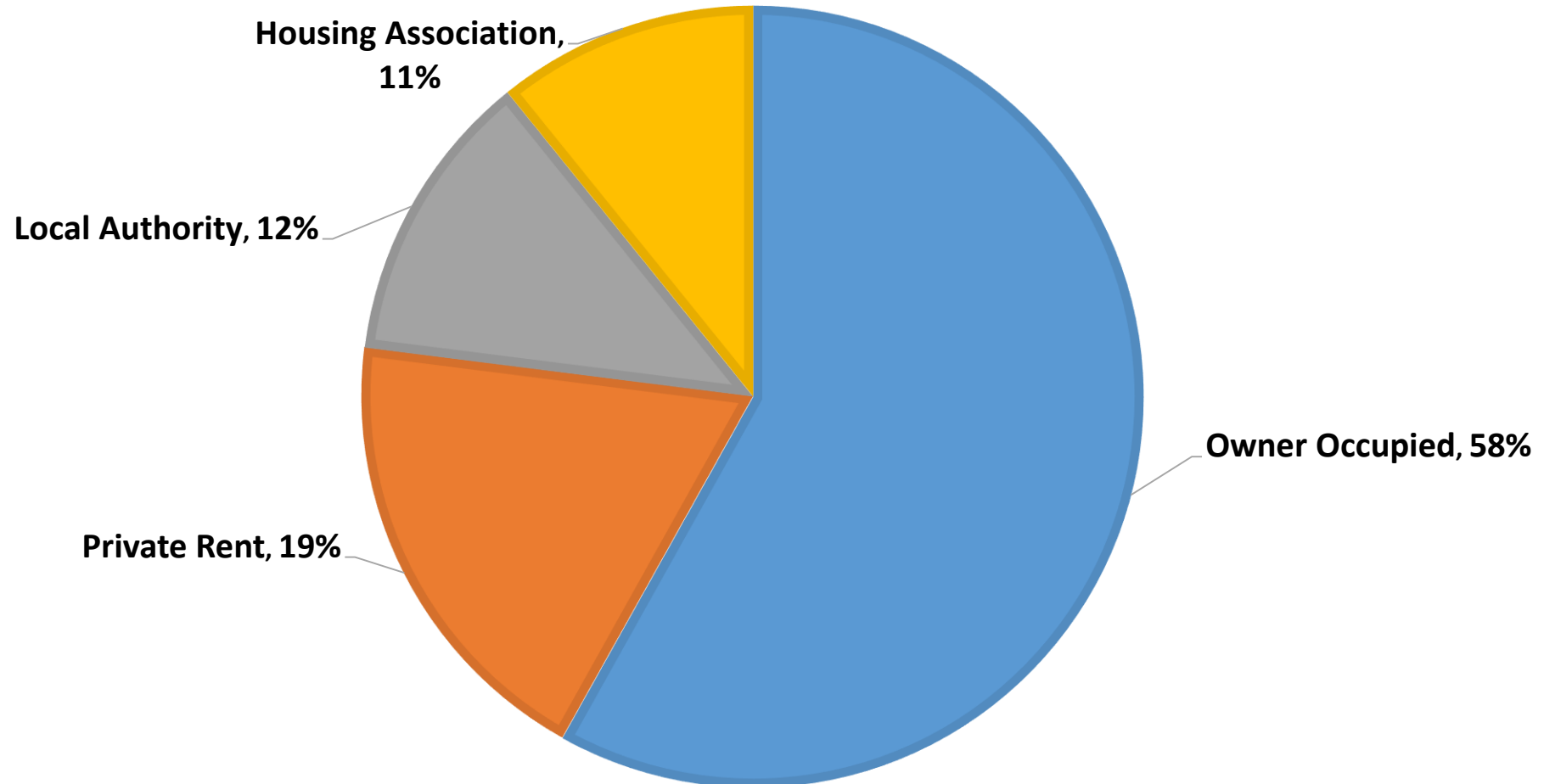
Lyn Jardine

Head of Innovation & Development

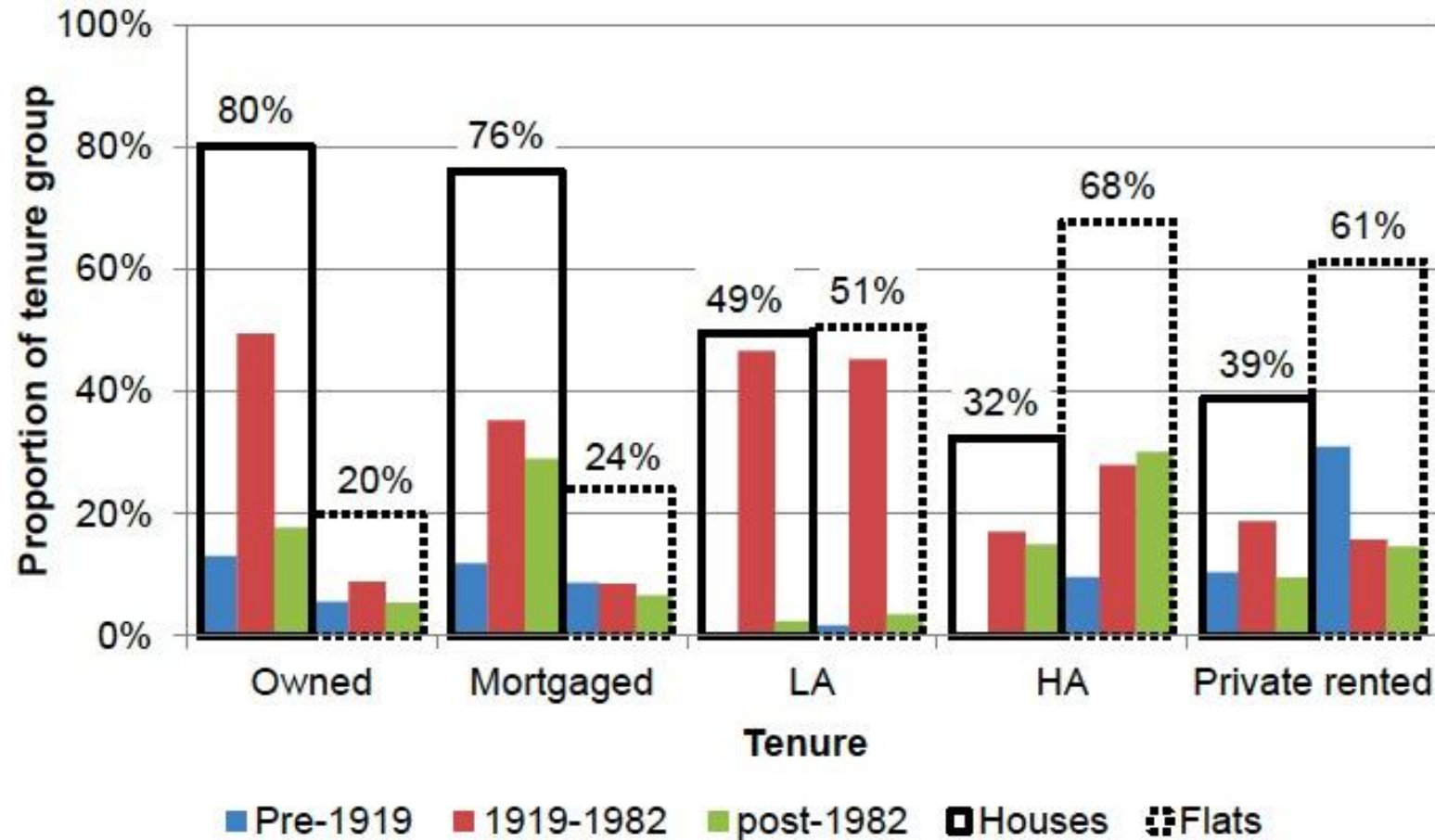
# Overview

- Context
- Regulation and compliance
- Policy priorities
- Challenges
- Opportunities

# 2017 Housing tenure

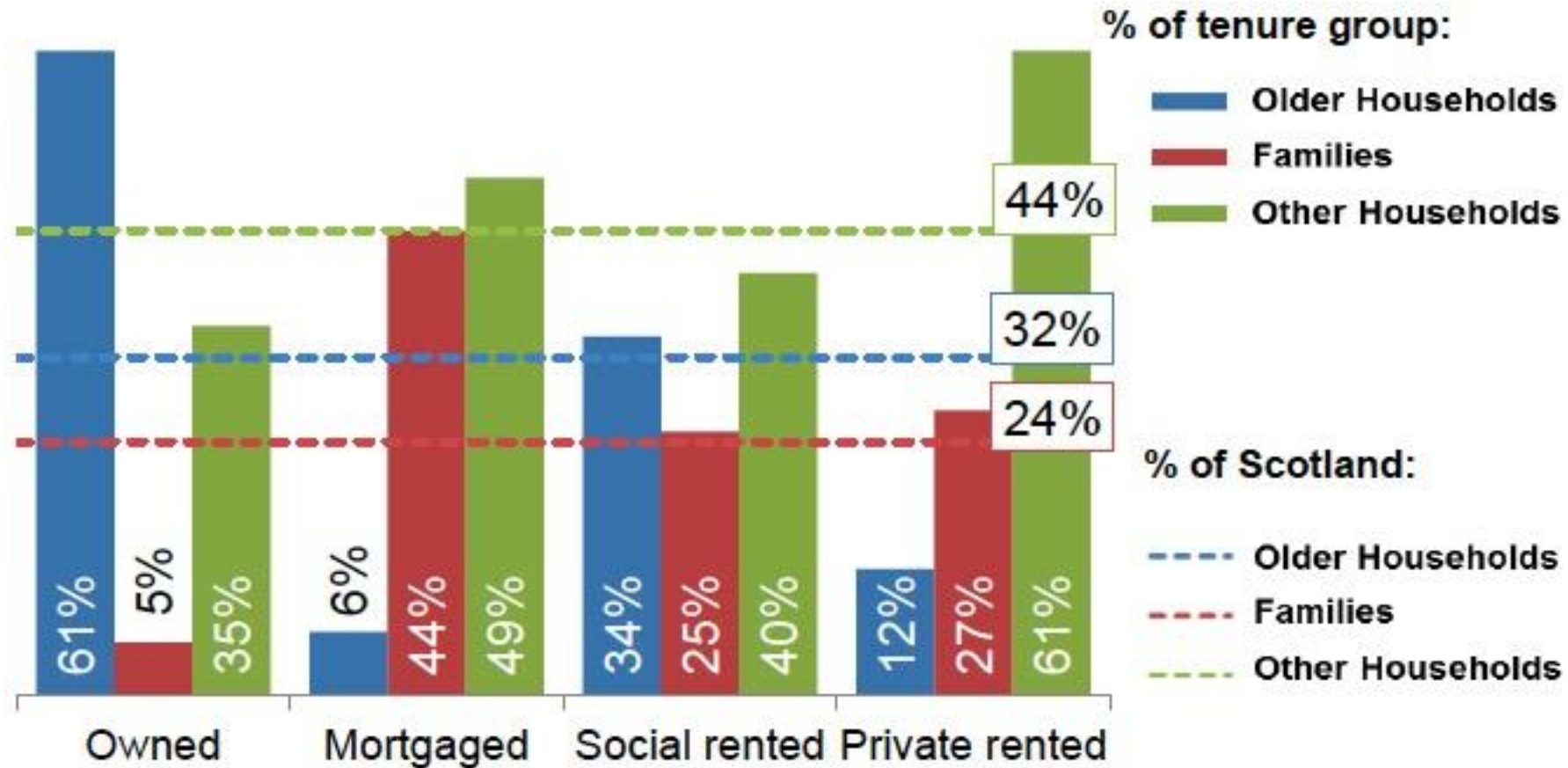


# 2017 Housing stock by tenure, age and property type



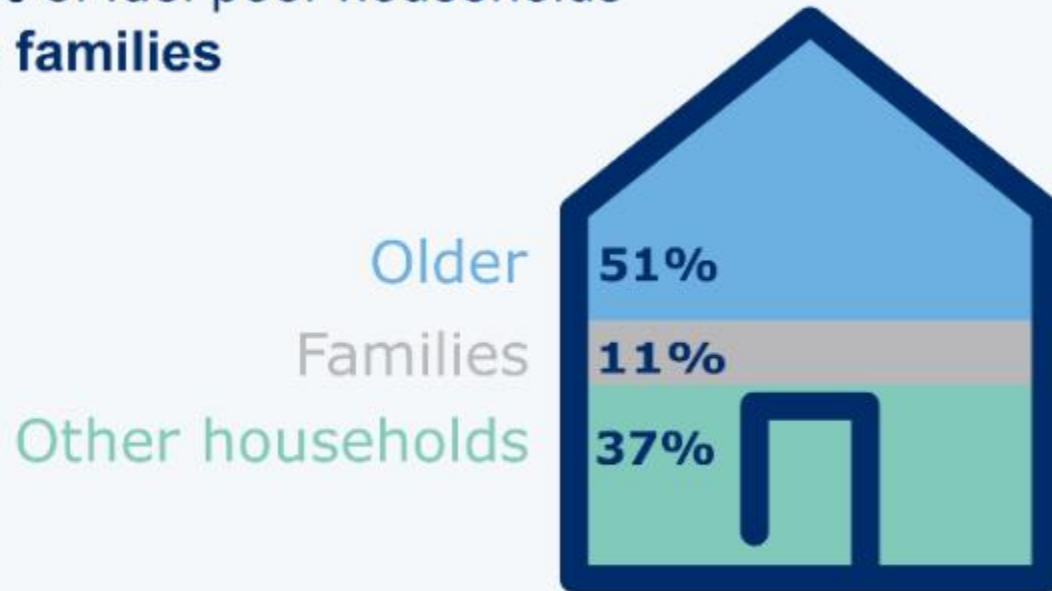


# 2017 Housing tenure by households

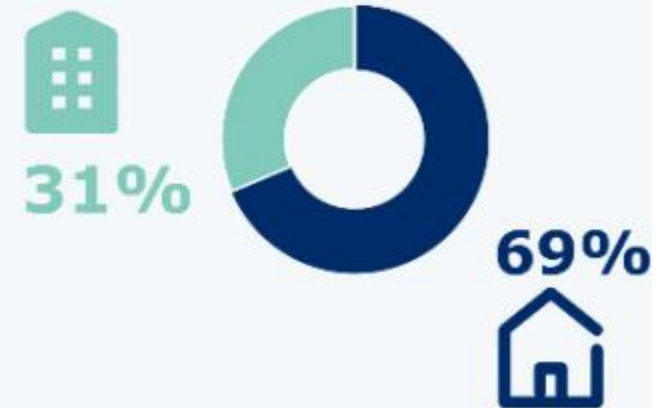


# 2017 – Scottish House Conditions Survey

11% of fuel poor households are **families**



**Seven out of ten** fuel poor households live in **houses**





# Context for ageing population

- More likely to live in owner occupation without a mortgage
  - Asset rich, but capacity to increase income limited/non-existent
- More likely to live in a house over 30 years old
  - Consideration to how fit for purpose their home is in terms of accessibility, size and manageability
- More likely to experience fuel poverty
  - Ex-Right to Buy especially problematic as many did not have capital to make improvements since purchasing

# Regulation and compliance

## **Owner occupied**

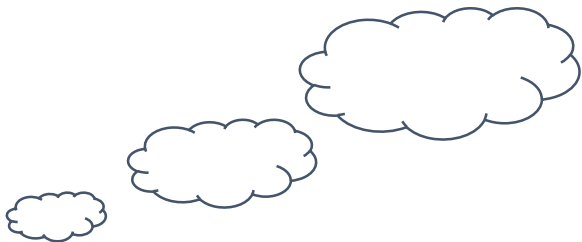
- Building standards
- Planning requirements
- New build or renovations only

## **Private rented**

- Registration of landlords
- Registration of letting agents
- Licencing of Homes in Multiple Occupation
- Energy efficiency standards
- Tolerable (habitable) standard

## **Social rented**

- Housing Regulator
- Care Inspectorate
- Office of Charities Regulator
- Housing for Varying Needs (new build) Standards
- Scottish Housing Quality Standard
- Energy efficiency standards
- Gas safety compliance
- Electrical safety compliance
- Fire Safety compliance
- Scottish Social Housing Charter
- Homelessness responsibilities
- Tenant Participation
- Public Protection
- Procurement
- Equality & Human Rights



# Policy priorities – Resources

- Welfare Reform issues
- Affordability of rents
- Affordable Housing Supply Programme (50,000 by 2021 - £3 billion plus)
- Energy efficiency
- Fire safety – post Grenfell
- B.....

# Policy priorities – Service provision

- Housing First – permanent, affordable house ASAP then support services/connections to sustain
- “Age, Home and Community” – national older people’s strategy
- Affordability of rents
- Digital services
- Dementia
- Domestic abuse

# Challenges – Social Housing specific

- Universal credit and welfare reform impact on financial health of the sector
- Compliance requirements puts pressure on investment capacity
- Housing development funding – post 2021??
- Housing support funding increasingly vulnerable and Housing 1<sup>st</sup> a priority but inconsistent strategic direction from IJBs
- Health & social care colleagues not having sufficient understanding of our specific limitations/remit

# Challenges – Public & 3<sup>rd</sup> sector

- Increasing complex care and support needs
- Ageing demographic
  - Impact of service provision
  - impact on workforce planning
- Place making to create healthy places and communities
- Analogue to digital
- Increased focus on technology
- “Municipalism” – public sector entrepreneurship

# Opportunities

- Many shared challenges across health, care and housing
- Housing associations are key community anchor organisations
  - Employability
  - Wellbeing
  - Isolation
  - Social enterprise
- Housing's contribution to wellbeing
- Housing and innovation
  - Social rented sector –test bed for innovation for wider market
  - TEC in Housing – Loreburn, Blackwood, Albyn
  - [A plug for our own innovation project](#)



Let's change perception of old age



# References

- Housing Tenure statistics available from <https://www2.gov.scot/Topics/Statistics/Browse/Housing-Regeneration/HSfS/KeyInfoTables>
- Scottish House Conditions Survey: 2017 Key findings available at <https://www.gov.scot/publications/scottish-house-condition-survey-2017-key-findings/pages/4/>
- Age, Home and Community – available at <https://www.gov.scot/policies/housing-and-independent-living/national-strategy-for-older-people/>
- The New Municipalism: taking back entrepreneurship – available at [https://www.apse.org.uk/apse/assets/File/Taking%20back%20Entrepreneurship%20\(screen\).pdf](https://www.apse.org.uk/apse/assets/File/Taking%20back%20Entrepreneurship%20(screen).pdf)
- Striking the right balance – Social Return on Investment Study of Very Sheltered Housing (2018) available at [https://www.hanover.scot/wp-content/uploads/2018/10/sroi\\_vsh.pdf](https://www.hanover.scot/wp-content/uploads/2018/10/sroi_vsh.pdf)

# Contact details



0131 668 4247



[www.viewpoint.org.uk](http://www.viewpoint.org.uk)



[lyn.Jardine@viewpoint.org.uk](mailto:lyn.Jardine@viewpoint.org.uk)

## Social Media



@ViewpointHA



ViewpointHA

# TEC in Housing

Marian Reid

TEC in Housing Project

Healthy Ageing Cluster Meeting  
30 May 2019



# TEC Ready Project

- **TEC Ready** project - 2 year project, showcased reach and contribution and of housing
- Funded by the Scottish Government's TEC Programme and supported by key partners, SFHA hosting
- Project legacy includes: [www.techousing.co.uk](http://www.techousing.co.uk) and **TEC in Housing Charter**





[www.techousing.co.uk](http://www.techousing.co.uk)

- Reflecting the reach of the sector
- Encouraging involvement
- TEC in housing solutions (filmed clips):
- 6 case study examples:
  - **Aberdeen City Council - MyChoice**
  - **Albyn Housing Society – Fit Homes**
  - **Blackwood – CleverCogs**
  - **Loreburn Housing Association – ARMED**
  - **Perth and Kinross Council – TEC Strategy**
  - **Tighean Innes Gall – A Tablet for the Patient**





- Launched March 2019
- Emphasis on **engaging customers, encouraging partnership working and review and redesign of services**
- Asks for '**top 3 priorities**' for TEC in Housing
- Aim for **100 signatories** over 2 years

# 7 Charter Pledges

- Pledge 1 – Opportunity and solution focused
- Pledge 2 – Engaging with the customer
- Pledge 3 – Working in partnership
- Pledge 4 – Preventative analytics
- Pledge 5 – Service redesign
- Pledge 6 – Supporting the workforce
- Pledge 7 – Getting the infrastructure right

**Commitment to at least 3 Pledges required**





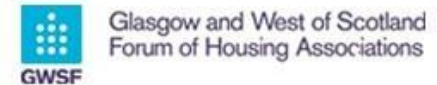
# TEC in Housing Next Phase 2019 – 2021

- Builds on work of TEC Ready and Charter – aims to scale up housing contribution
- Focus will be on customer-centred approaches and service redesign
- Will include Customer Forum – to advise and influence
- Two key enablers for project - Internet of Things and Housing Sector Digital Maturity Audit





[www.techousing.co.uk](http://www.techousing.co.uk)





# People must be at the centre



Inclusive

Secure

Multi  
generational

Beautiful

Healthy

Multi  
tenure

Sustainable



We live in an overcrowded world...



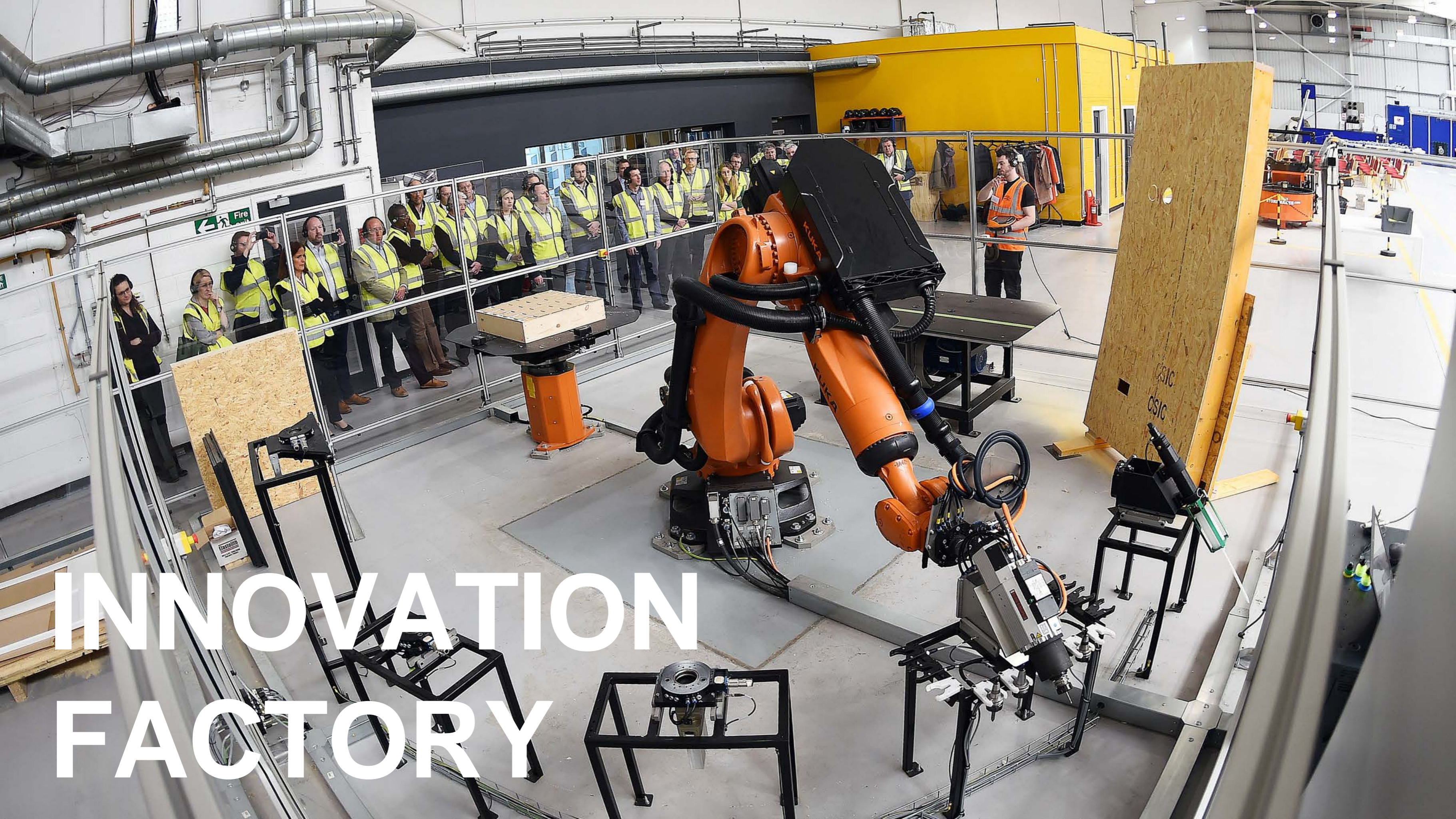












# INNOVATION FACTORY





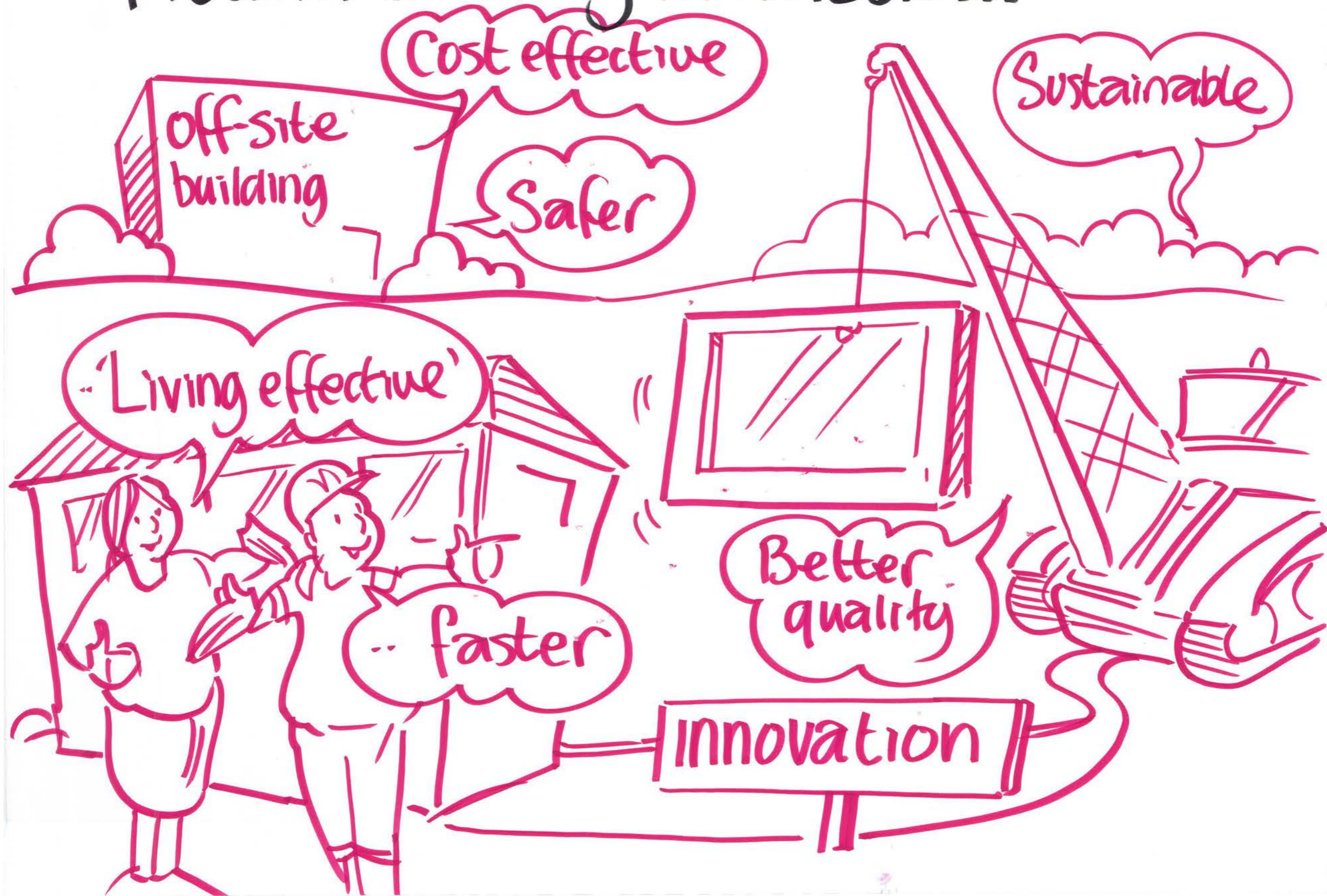
KONECRANES

5.0 t

WEINMANN



# Modern building methods...





# **Innovation support for Housing Associations**

- **Alliance between SFHA & CSIC**
- **Innovation ecosystem**
- **BIM**
- **Offsite housing**



13 Nov 2018

# CSIC Funding Call to launch at SFHA Development Forum

A funding call for support for Modern Methods of Construction will be launched at the SFHA Development Forum on 22nd November.

Construction Scotland Innovation Centre (CSIC) and SFHA have entered a partnership to increase opportunities and provide support for SFHA members. A funding call for support for Modern Methods of Construction will be launched at the SFHA Development Forum on 22nd November.





# **Offsite construction for social & affordable housing projects**

- **SFHA, COSLA, Scottish Enterprise,  
Scottish Government, CSIC**
- **Evidence base**
- **Industry capacity to scale**
- **Co-design of solutions**

# Preparing for BIM

## BIM 'Offline' Hub

A 'Step by Step' Awareness  
& Implementation Programme  
with free events, free resources  
& free advice.

The screenshot shows the website for the Construction Scotland Innovation Centre. The page is titled 'Preparing for BIM'. It features a navigation menu with links for Home, About us, Our support, Projects, Skills, and Contact us. The main content area includes a sidebar with links for Skills, Why BIM?, What are the barriers to BIM?, Assess your BIM Capability, Events, and Resources. The main text explains that BIM will be adopted in public sector projects by April 2017 and will support the creation of a more efficient and sustainable built environment. It also mentions that CSIC, supported by Scottish Enterprise and the Scottish Futures Trust, is helping Scottish SMEs get ready for BIM Level 2 with a programme of free awareness and implementation events and free impartial advisory service. A call to action button 'Start here' is visible. Below the main text, there is a section for 'Building Information Modelling' with an 'Advisory Service' link. At the bottom, there is a section for 'WHAT DOES BIM MEAN TO ME?' featuring a group of professionals holding signs for various roles: MANUFACTURER, SOLICITOR, COST MANAGER, CONSULTANT, CONTRACTOR, CLIENT, and ARCHITECT. Social media icons for Facebook, Twitter, LinkedIn, and YouTube are also present.



Join the network today, register at [www.cs-ic.org/BIM](http://www.cs-ic.org/BIM)



# The Emotional Gym

## Challenge

Develop new housing solutions for over 60's that allow residents to live independently in their homes for longer

## Project

Pilot the use of building integrated and wearable technology within the retrofit of a high-rise development to encourage ongoing physical and mental stimulation

## Outcomes

- Tenants are more active and remain in their homes for longer
- New uses for under utilised spaces within high-rise buildings identified
- Technologies deployed within buildings to support independent living

## Support

- Total Project Value                      £49,388
- CSIC Funding                                £19,755
- Project Duration                            January 2017 - July 2017



# Future technology strategy for Housing Associations

## Challenge

The technology associated with building and operating social housing is going to change dramatically over the next 10 years. How should Housing Associations be thinking about future strategy to prepare for this?

## Project

The Property Tech 2025 project will help Wheatley Group understand technology and housing development trends and potential future directions likely to impact their business. This will include: materials and products, digital construction techniques, housing typologies and technology integration.

## Outcomes

- An overview of international trends, innovations and opportunities
- Focus groups and interviews using Interaction Design and Design Scenarios
- Provide themes to shape the Technology and Development Strategy for 2020-2025

## Support

- Total project value £98,000
- CSIC contribution £43,000
- Project Duration April 2018 – October 2018



THE UNIVERSITY  
of EDINBURGH



# Scotland's First Off-site Manufactured Gold Standard Housing Development

## Challenge

With Scotland facing an acute affordable housing shortage, the use of volumetric construction lends itself to providing affordable and sustainable homes within benchmark housing association costs

## Project

48 new homes were built offsite using volumetric techniques - a first for this scale in the affordable sector. Whole life cycle costing, building performance & post occupancy evaluation

## Outcomes

Delivery of Gold Standard sustainable quality housing with high thermal performance built in a significantly reduced timeframe at an affordable cost. Conventional construction times could readily be reduced by 50% a unit

## Support

- Total project value £130,000
- CSIC contribution £61,000
- Project Duration November 2015 – April 2017



# get in touch...

**sbuchanan@cs-ic.org**



**0141 212 5250 / 07729637675**



**www.cs-ic.org**



**@CScotIC**



**construction scotland innovation centre**

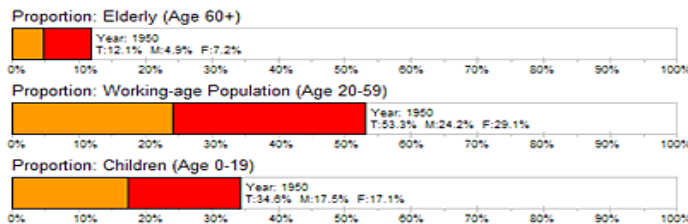
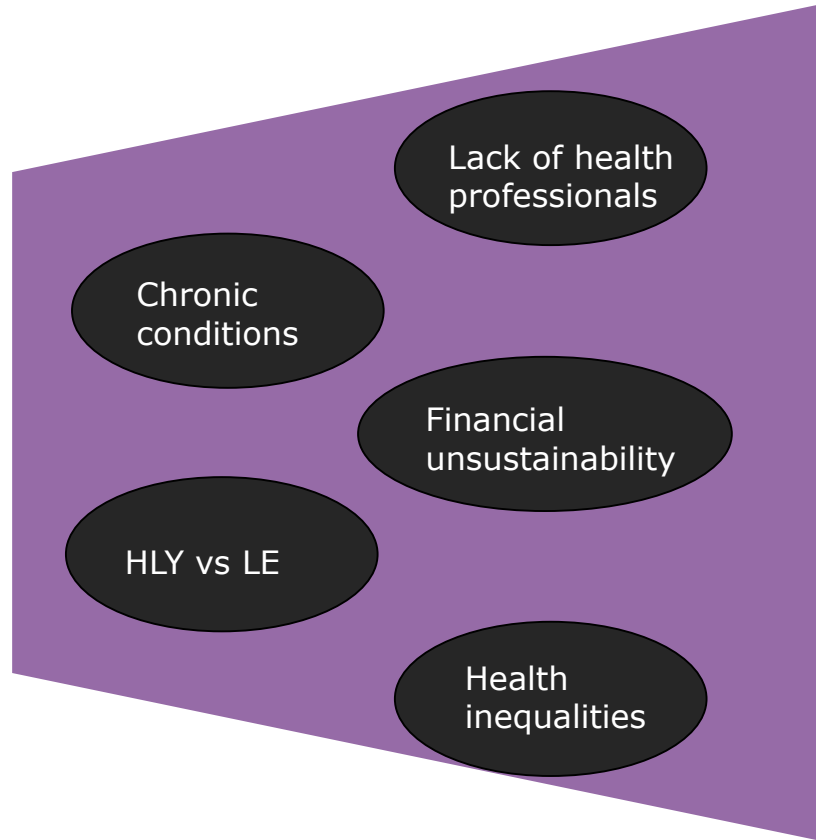
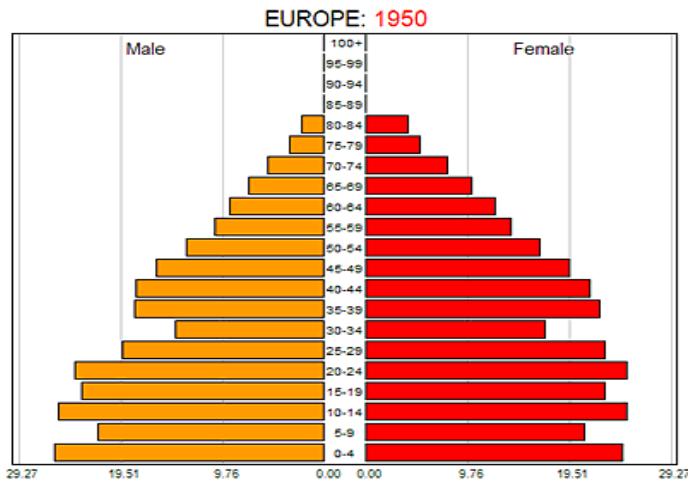




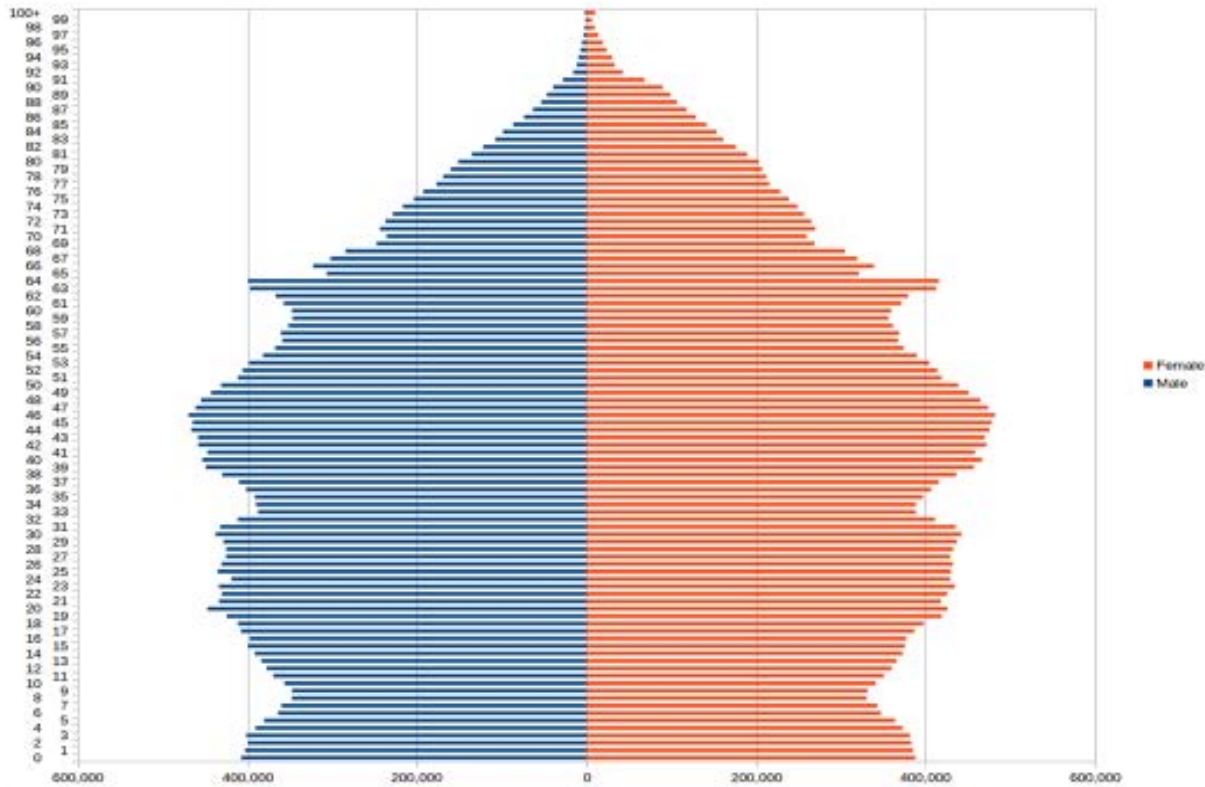
# HEALTHY AGEING INNOVATION CLUSTER

## April 2019

# Ageing society



# Scotland's Demographics - 2012



**Scotland Demographics**



WHO definition of Healthy Ageing:  
**“the process of developing and  
maintaining functional ability that  
enables wellbeing in older age”**

This includes a person's ability to;

- meet their basic needs
- learn, grow and make decisions
- be mobile;
- build & maintain relationships
- contribute to society

# Healthy Ageing Innovation Cluster – *‘Success through Collaboration’*

## Purpose

- Collective of shared interest  
- expertise and skills
- Share information and support knowledge exchange
- Seek & solve demand led challenges
- Host challenge competitions
- Identify funding opportunities
- Build Collaborations

## Activities

- Current focus on anticipated IUK Grand Challenges – Healthy Ageing but many other funding sources
- Identify key priorities and collaboration opportunities

Facilitated by.....

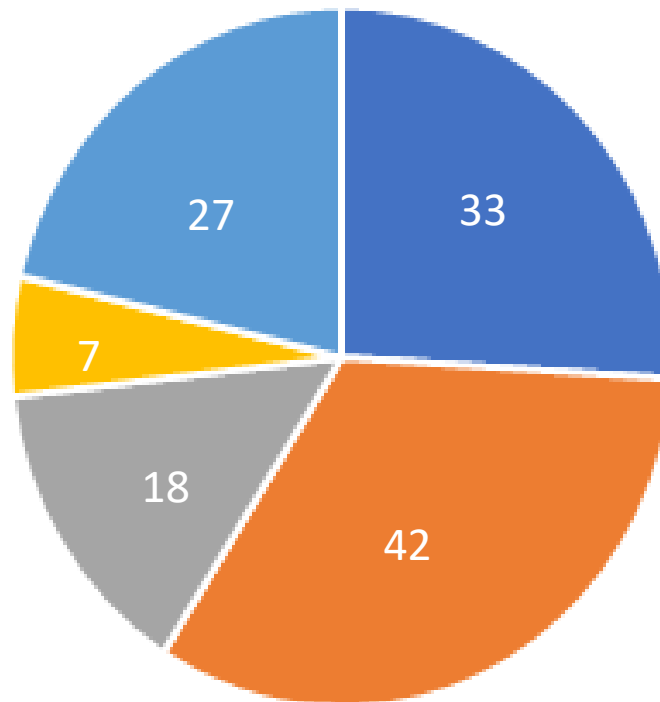




Source: [www.millerelect.com/collaboration-creates-construction-project-efficiencies/](http://www.millerelect.com/collaboration-creates-construction-project-efficiencies/)

# HAI Cluster Membership – Feb 2019

Number of Cluster Members



127  
Members

■ Academic ■ Industry ■ Local Authority ■ NHS ■ Other



# Healthy Ageing Innovation Cluster

## Discussion Session (Feb 2019)

- Vision & Impact – what difference are we trying to make collectively?
- Priorities – what are our key collaboration opportunities?
- Connecting & Integrating – what useful existing assets/links with other activities & organisations?



# HEALTHY AGEING COLLABORATION PRIORITIES – Feb '19

## COLLECTIVE LEARNING

### Awareness of Policy & Guidance

- Scottish & UK Government – Policy Direction
- Relevant Strategic Guidance & Best Practice
- Team Scotland Approach

### Awareness of Technology

- Consumer Technology
- Keeping pace with a fast moving market
- Build Trust to Share

### Identify Funding Opportunities

## JOINT DEVELOPMENTS

### Shared Focus on Specific Conditions/Challenges

- Falls,
- Diabetes,
- Physical Activity

### Support Independent Living

- Transport
- Housing
- Supporting people to work longer
- Hospital at home
- Care in the Community
- Reducing inequalities

### Develop

- Test beds
- Data/Analytics
- Patient/Citizen Journeys

## RESEARCH & METHODS

### Prevention

- When should interventions best be made?
- Better adoption at earlier stage in life?

### Evidence Impact

- Health Economics
- Methodologies
- Real World Impacts

### Ensure Citizen at the Centre

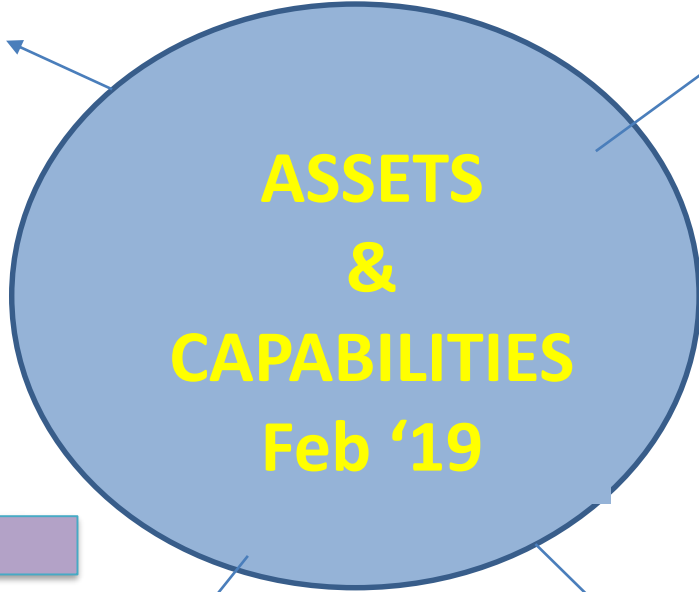
- What does the citizen want?
- How best engage with the end user?
- Co-design
- Build Trust

## SKILLS & CAPABILITIES

### Skills & Training

- Joint Learning

### Business Models for Scotland



**Technology**

- IOT
- Sensors
- Industry IT Knowledge
- Ability to add technology layers
- Ability to Trial Technology
- Range of Technology

**Open Digital Infrastructure**

**Industry**

- Industry Knowledge
- Ability to move quickly
- Funding

**Global Capacity**

**Bridge between Industry & Academia**

**Data**

- Linking consumer data
- Data Analysis
- Existing Data

**Academic Expertise**

**Existing Research projects**

**Cross-disciplinary research groups**

**National Best Practice**

**Crear Business Model for Scotland**

**Procurement**

- Innovative procurement

**Champions**

**People/Workplace**

- Skills and Training
- Volunteers
- Training in communities
- Knowledge/Expertise
- Citizens – real life!

**Captured Audience**

**Links with Networks & Forums**

**Scottish Care Network**

**Housing Associations**

**Large Strategic groups**

**KTN**

# LINKS & CONNECTIONS Feb '19

## Test Beds

- People
- Public Sector
- Private Sector

## Citizen Engagement

- Citizen enabled collaborations

Small commercial/private companies

Hospital to Home (and vice versa)

## Forums

Integration of H&C for:

- Testing
- Deployment

Focus Area Specific Forums

Technology Led Innovation Route

## Education & Training

- Digital as part of health courses

Academia – expertise in key challenges

Public Sector Organisations

Existing Research projects

Scottish Care Network

Cross-disciplinary research groups

NHS Health Boards

KTN

Thinking Space Group

Scotland Excel

Housing Associations